

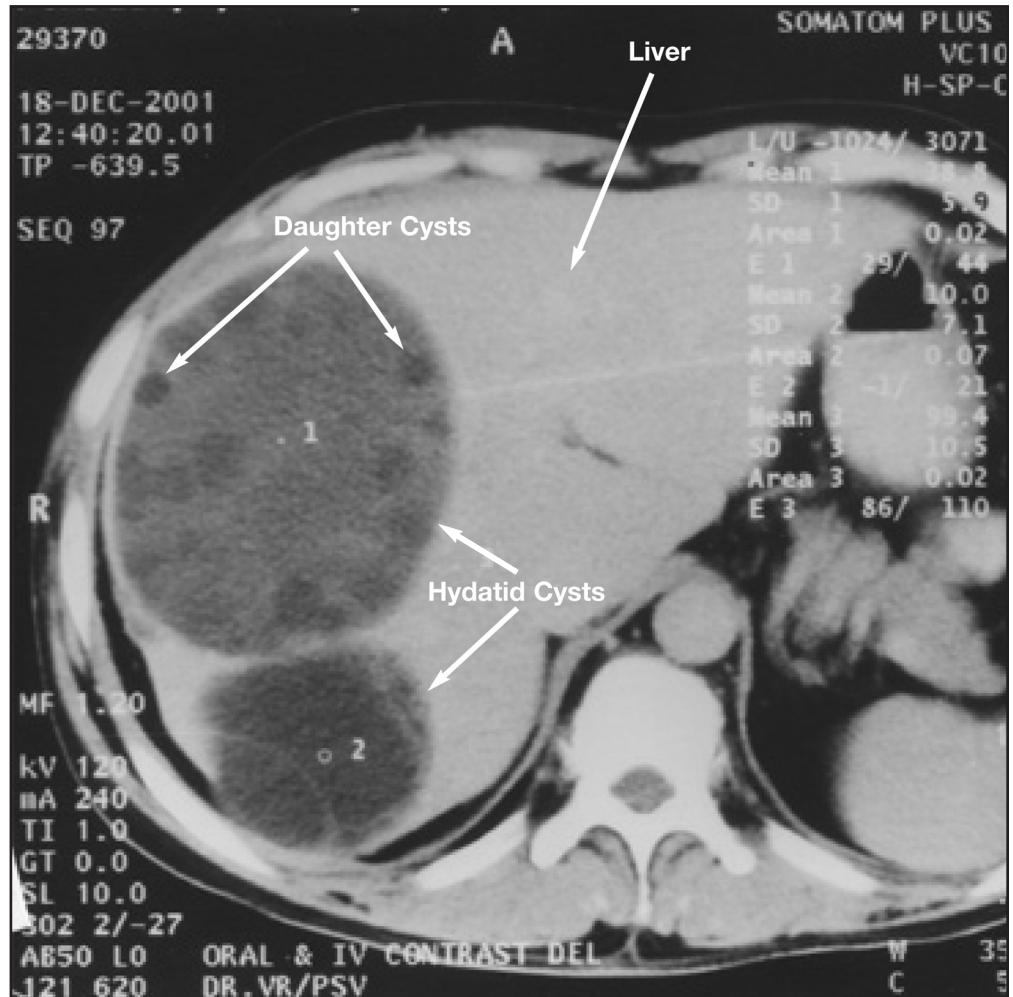
Diagnosis – Hydatid Cyst Disease

Mrinal M Patnaik, MD* and Alaka K Deshpande, MD

The diagnosis of hydatid cyst disease was made for the case presented in the December 2006 Aperture based on this computed tomography (CT) scan of the abdomen. The CT shows the presence of two large hydatid cysts, along with daughter cysts, in the right lobe of the liver.

Hydatid disease is caused by the *Echinococcus* species, of which *E. granulosus* (cystic hydatid disease) and *E. multilocularis* (alveolar hydatid disease) are the most important. *E. vogeli* and *E. oligarthus*, both of which cause polycystic hydatid disease, are rare and are seen primarily in Central and South America.

This patient from rural India was diagnosed to have hydatid cyst disease, on the basis of CT image morphology and a positive immunoblot test (95% specific). He is currently being treated conservatively with Albendazole.



Keywords: Hydatid cyst, Computed tomography, *Echinococcus* sp., Liver disease, Albendazole

Author Affiliations:

*Mrinal M Patnaik, MD, Department of Internal Medicine, University of Minnesota, Minneapolis, MN 55414 USA

(Email: mirnal.patnaik@gmail.com)

Alaka K Deshpande, MD, Department of Internal Medicine, Grant Medical College and Sir JJ Hospital, Mumbai, India

* To whom correspondence should be addressed.

DOI: 10.3121/cm.2007.720.2

The Aperture, like the opening in the lens of a microscope that allows light to pass through, is a forum for art, humor, and images that provides a portal for new or different views of medicine and research.